



## COMPANY PROFILE

BASCO INDIA has been recognized as the market leader in the manufacturing and distribution of medical equipment in the field of Dermatology Gynecology, Ophthalmology, Plastic and General Surgery.

We are committed to providing our customers with a wide suite of products which are affordable and of high quality standards. All products are designed to achieve the maximum treatment results. With two regional offices, a country wide distributor network and presence in many countries around the globe Basco India is able to reach almost all customers and provide unparalleled service and support.

## OUR RANGE OF PRODUCTS

Sl.No.	Products	Speciality	Page No.
1	CRYO SURGICAL SYSTEM	GYNAEC, E.N.T. DERMATOLOGY & GENERAL	1
2	PROBE	GYNAEC, E.N.T. DERMATOLOGY & GENERAL	2
3	LED SPOT LIGHT	GENERAL SURGERY	3
4	SS TRAY	GENERAL SURGERY	4
5	LED HAND TORCH	USEFUL FOR ALL DEPARTMENTS	5
6	COLPOSCOPE BASCO	GYNAECOLOGY	6
7	DIGITAL VIDEO COLPOSCOPE	GYNAECOLOGY	7 & 8
8	MANUAL HAND VACCUM PUMP	GYNAECOLOGY & GENERAL APPLICATIONS	9
9	PORTABLE SUCTION MODEL SXT-1A	GENERAL	10
10	MAGNAVISON	GYNAECOLOGY GERNERAL	11
11	Co <sup>2</sup> CONVERSION KIT	GENERAL	11
12	R.F. CAUTERY	DERMATOLOGY PLASTIC OPHTHALMIC	12 & 13
13	SLE, SLH, HI8000 LED LIGHT/IMP	GENERAL	14
14	T.T.L HEAD MAGNIFIERS	GENERAL, DERMA, & PLASTIC	15
15	EAR PIERCING GUN	COSMETOLOGY	16
16	MICRO MOTOR	DERMATOLOGY	17
17	BYFRICATOR	DERMATOLOGY & ENT	18
18	DERMAJET	DERMATOLOGY & PLASTIC SURGERY	19
19	MINI CRYO GUN	DERMATOLOGY & COSMETOLOGY	20
20	CRYO STORAGE CANS	DERMATOLOGY	21
21	IONTO PHORESIS	DERMATOLOGY	22
22	WOODS LAMP	DERMATOLOGY	23
23	PORTABLE PUVA	DERMATOLOGY	23
24	SKIN BIOPSY PUNCHES & BATTERY CAUTERY PTC	DERMATOLOGY & OPHTHALMIC	24
25	SURGICAL DIATHERMY	GENERAL	25
26	BIPOLAR COGULATOR	GENERAL	26
27	OPHTHALMIC CRYO MODEL-002	OPHTHAMOLOGY	27
28	DIGITAL DERMASCOPE	DERMATOLOGY, HAIR TRANSPLANTATION	28
29	CRYSTAL FREE MICRO DERMABRASION	DERMATOLOGY & COSMETOLOGY	28
30	FOLLIPEN	HAIR TRANSPLANTATION	29
31	FUE EXTRACTOR & SILICON GEL HEAD BEDS	HAIR TRANSPLANTATION	30
32	FOLISCOPE 2.8	HAIR TRANSPLANTATION	31
33	HAIR TRANSPLANT INSTRUMENTS	HAIR TRANSPLANTATION	32
34	COLD LIGHT SOURCE WITH FIBRE OPTIC HEAD BAND SYSTEM	E.N.T. & GENERAL SURGERY	33
35	COSMO CHAIR	DERMATOLOGY, HAIR TRANSPLANTATION	34
36	FRACTIONAL Co <sup>2</sup> LASER SUDAR FLEX	DERMATOLOGY	35 & 36

# GYNAEC GENERAL & E.N.T BASCO-CRYOS

## CRYO SURGICAL SYSTEM

Using Nitrous Oxide ( $N_2O$ )

for Gynaecology, General Surgery,  
Otorhinolaryngology & Dermatology.

## BASCO-CRYOS UNIQUE FEATURES & BENEFITS

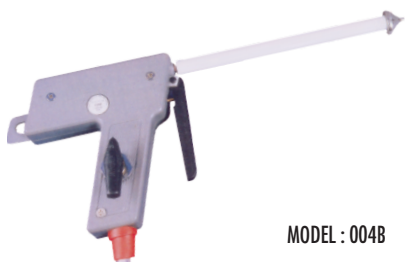
- Made with high quality Hypodermic needles - ensures smooth flow of cryogenic gas and lasts longer.
- Equipped with specially designed 'Silencer' - enables quieter operation.
- Body made of ABS Plastic, in attractive colours - Aesthetically appearing.
- Specially designed Probes for different specific end uses - enables wide usage of same instrument for different specialities.
- Attractive light-weight carrying case-easy portability.
- Available with ON - OFF Control Instrument also, as additional facility.



SILENCER MODEL :  
**CRYO 004 DELUXE**



## SUPER DELUXE WITH ON - OFF CONTROL SYSTEM



MODEL : 004B

### CRYO 004B ON - OFF SUPER DELUXE

- This enables us to cut-off the gas line (flow) without closing the cylinder while we interchange the probe.
- Cleaning the inner hypodermic needle will be much easier, thus saving valuable time.
- $CO_2$  gas can be used in the equipment very conveniently, since removal of any clog will be very simple.

# GYNAEC, GENERAL & E.N.T

## DIFFERENT TYPES OF CRYO PROBES

### INTERCHANGEABLE SPECIAL PURPOSE PROBES (OPTIONAL EXTRA)

#### GYNAECOLOGY

COMMON ENDO-EXO CERVICAL PROBE D-25 L-8

ENDO-EXO CERVICAL PROBE D-22 L-15

EXO CERVICAL PROBE D-22 L-10

DEEP ENDO-EXO CERVICAL PROBE D-22 L-25

SMALL ENDO-EXO CERVICAL PROBE D-19 L-13

SPECIAL ENDO-EXO CERVICAL PROBE D-19 L-10

SPECIAL ENDO-EXO CERVICAL PROBE D-19 L-00

SHARP MICRO SPECIAL PROBE CONDYLOMA D-8 L-10

STRAIGHT CONDYLOMA ACCUMINATA D-5 L-25

MICRO TIP D-2 L-12

**D-DIAMETER IN MM**

#### GENERAL SURGERY

D-8 L-25 HEMORRHOID GENERAL PURPOSE PROBE ROUND

D-8 L-25 HEMORRHOID GENERAL PURPOSE PROBE  
(Double Side Flat)

D-8 L-10 RUDD HEMORRHOID PROBE

D-8 L-27 HEMORRHOID CONE PROBE

D-8 L-15 BEVEL EDGE DERM. PROBE

#### OTORHINOLARYNGOLOGY

D-4 L-20 STRAIGHT NASAL PROBE

D-4 L-10 CURVED NASAL PROBE

20X3.5 FREEZE PORTION INSULATED FLAT NASAL PROBE

D-2 L-3 SPECIAL MINATURE TIP FOR DERMATOLOGY

MOUTH PROBE FOR TONSILS, PHARYNX, MUCOSA

Upper Surface 4.16 Cm<sup>2</sup>  
Bottom Surface 5.00 Cm<sup>2</sup>  
Face 2.75 Cm<sup>2</sup>

**L-LENGTH IN MM**



# LED SPOT LIGHT GOOSE NECK MODEL FS2012

Lamp Type  
Light Source  
(Power consumption)

Housing

Colour Temp  
Input Voltage  
Working Frequency  
Material

LED Spot Light

50,000 hours Service  
Life

Polycarbonate  
Moulding

5,500 K  
180 ~ 220V AC

50 ~ 60HZ  
Stainless Steel / Mobile  
stand with castor wheels  
and Goose Neck for  
convenient Positioning  
and Distance Adjustment

Facula Lux  
Brightness Control

60,000  
Adjustable



## Features

- Malleable Goose Neck
- More light and less heat
- Versatile application
- Works on AC Volts
- Less light pollution
- Reduces strain on air conditioners

## Floor Stand Model F/S - 2012



LED Light Wall Mount Model  
W/M - 2012

## Table Clamp Model T/C - 2012



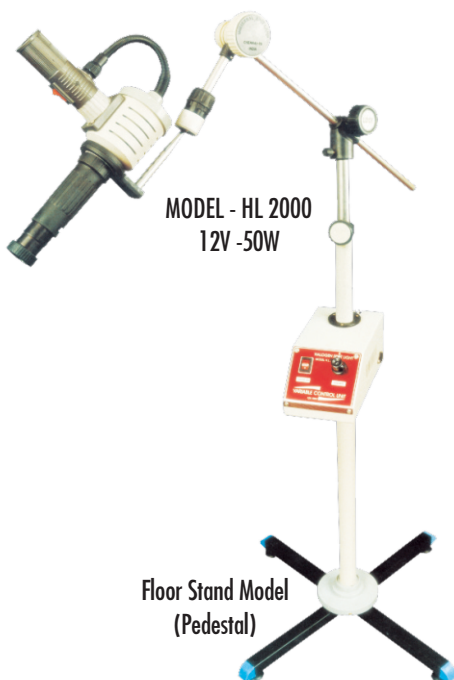
**GYNAEC, OP.D.,  
GENERAL SURGERY  
& E.N.T.**

## **UNIVERSAL HALOGEN SPOT LAMP**

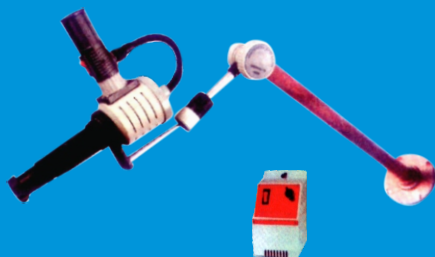
**Examination Light/  
O.T. Light for  
critical applications  
in General Surgery,  
Gynaec., E.N.T.,  
Dermatology &  
Ophthalmology**



### **MULTIPURPOSE HALOGEN SPOT LAMP**



### **HALOGEN WALL MOUNT**



### **SILICONE MATT TRAY**

**Stainless Steel (Autoclavable)**

**S.S. Tray-Single**



**S.S. Tray-Double**

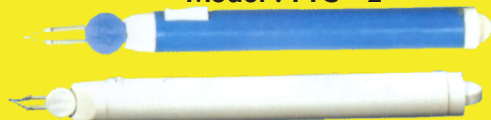


# LED SPOT LIGHT HAND TORCH-MULTI PURPOSE Model : LED - HT - 2012



## BOVIE BATTERY CAUTERY

Model : PTC - 2



30mm



Available Tips Contra Angular,  
Circular and Straight

Bovie Battery Cautery is designed for ambulatory Surgical use in Dermatology where can be used to remove small varicose Growths, Papilomas, Warts Skin Tags, DPN / Vaginal and Vulval) Warts etc. This is also very useful for minor surgery in ENT and Plastic Surgery etc.

The basic principle of the cautery is an excision of these growths, destruction of pathological growths and for the coagulation of blood vessels by using heating tip as well, besides its traditional applications at the surgery in many medical branches.

### SPECIAL FEATURES

1. Handy, Light weight.
2. Easy to handle since it is shaped like a pencil
3. Wireless, hence it can be used whenever there is no electrical power supply accessible.
4. Owing to low cost and operational possibilities it can be used as a complement to a high frequency electro cautery.
5. Straight or curved operating tips for every day use.

### TECHNICAL SPECIFICATION

Tip temperature 700°C  
Tip Length 30 mm (Normal Length)  
Power Source - 2.4 V - 3V

# GYNAECOLOGY COLPOSCOPE

**Unmatched for Gynaecological diagnosis / Inspection  
and Examination or Research**

**Green Filter** Helps to  
view Blood Vessels /  
Tissue / skin colours  
without discolouration

**Cold Light Source**  
Halogen Fibre Optic Light  
Source. No heat/warmth to  
inconvenience patient or  
examiner. Operates on 230V  
AC. Available with Single  
or Double outlet.

**Exclusive Tilting  
arrangement**  
Viewing angle can be  
changed to suit seated,  
standing or stooping  
viewers / Surgeons

**Note :**

Colposcope  
is supplied  
duly fitted  
with the stan-  
dard 300mm  
Objective Lens.  
Other two Lenses  
(200mm&400mm) will  
be supplied as optional at  
extra cost. Colposcope is  
supplied with single  
outlet light source. Twin  
light source will be  
optional at extra cost.



**Model CM-51020**

# COLPOSCOPE

**IMPORTANT :**

After use, always  
close the Objective  
Lens and Eyepiece  
with the Caps supplied.  
Also, fully covering the  
equipment with cloth  
is necessary to  
avoid dust deposit.

## COLpro222DX-OZview Digital Video Colposcope



Image Processor	: SONY Japan Color CCD
Pixels	: 12,00,000
Resolution	: >825 lines(standard)or >1000 with GAMMA ON
E-frip&Mirror Image	: Yes
Variable Light Intensity	: Yes(5 Levels)
Variable Light Intensity	: Yes(5 Levels)
Multigrade Green Filter	: Yes(4 Levels)
Blue Fiter	: Yes
S/N Ratio	: >48db
Avg LED Lemp Life	: >50000hrs
Color Temperature	: 7000oK
Illumination	: High MCD Super Bright White Shadowless LED Light

### Optional Accessories

Cervical Biopsy Punch Forceps  
Endocervical Speculums  
Endocervical Curettes  
Cervical Dilator Sets  
Tissue Hook

Focus	: Automatic&Manual
Focus Distance	: 20-30cm/30-40cm
Depth of view	: $\varnothing$ 200mm-5mm
Viewing Area	: $\varnothing$ 170mm-10mm
Zoom	: 1-55x
Magnification Display	: Yes
Test Timer	: Yes
Video Outputs	: 1xY 1xBNC composite 1xUSB 2.0 (Optional)
Safety Standard	: Complies to IEC 60601
Remote control (optional)	: for operative function
Gamma Processor	: through remote control
Power Supply	: 100-240 VAC, 50/60Hz



Specifications/color subject to change without prior notice SONY is a registered trademark of SONY Corporation Japan.  
Reproduction this catalogue in full or part is prohibited



**Made in Australia by :**  
**Promis Medical (Australia) Pty Ltd**  
46/11-13 Brookhollow Ave., Level 3,  
Baulkham Hills, NSW 2153, Australia  
Phono : +612 8850 6918  
Fax : +612 8850 1826  
E-mail : [info@promis-medical.com.au](mailto:info@promis-medical.com.au)

**European Representative :**  
**Promis Medical Systems GmbH**  
Carl-Zeiss-Straße3  
25415, Quickborn, Germany  
Phone : +49 4106 68080  
Fax : +49 4106 82285  
E-Mail : [info@promis-medical.com](mailto:info@promis-medical.com)

Get up close and personal to the remarkable images of cervix and genital area for effective colposcopy diagnosis and treatment. A powerful combination of advanced video technologies from proMIS Medical and the feedback received from numerous gynaecologists, users and stake holders, motivated us to introduce our newest, most advanced and unparalleled model of widely acclaimed proMIS Digital Video Colposcopes.

## Key Features

### Variable Light Intensity

Facility to increase or decrease light intensity to 5 different levels to observe finest changes in tissue structure.

### Variable Electronic Green Filter

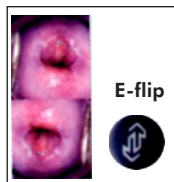
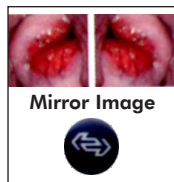
Facility to choose from 5 different grades of Electronic Green Filter to ensure best diagnosis. The Examination of cervix under different levels/grades of green effect makes it possible to see the best vessel patterns, types and its nature. Electronic Green Filter spreads the green light on the entire cervix without any light loss.

### Variable Image Colors

Facility to choose from 5 different settings of image colors to achieve best color differentiation in epithelium. A freedom to examine cervix with different magnitude of color and contrast gives a new dimension to colposcopy procedure. Here you get an image of your choice which is more eyes perceptive for best diagnostic conclusion.

### E-flip & Mirror Image

Facility to change the direction of the image from life to right horizontally and from upward to downward vertically to get the view of cervix to your liking this has been made possible by our unique E-flip and Mirror image functions which are available directly on the colposcope head.



### Gamma Processor

Gamma Processor can be accessed through remote control: it assures high image quality processing for better visualization of vessels & tissue structure to provide you additional information and greater reliability.

### Remote control of important functions

Facility to control important functions of the colposcope completely even from a distance saving You the effort and time without losing focus on the patient's examination area.



### Auto Focus

Facility to focus on the object automatically. Due to the wide focus range, doctor can use long instruments for biopsy orleep or cryosurgery.

### Magnification

Facility to continuously magnify images using zoom-in & zoom-out buttons to make perfect observation & take biopsy easily.



### Freedom of Connectivity

Facility to connect top TV, medical grade monitor, desktop computer or laptop. Also available as a complete workstation with trolley to make you easy and comfortable. 2 video outputs can be taken on two different video monitors or computers simultaneously without any loss of signal. DV outputs is optional.

### User Friendly Design

It is based on an ergonomic design. Easy to operate, can fit into any type of environment and it is built on stand that can be moved to any location as per user's discretion. Height adjustment of colposcope allows you to have best positioning for colposcopy procedure. Workstation/ trolley version available.

### Maintenance free Light Source

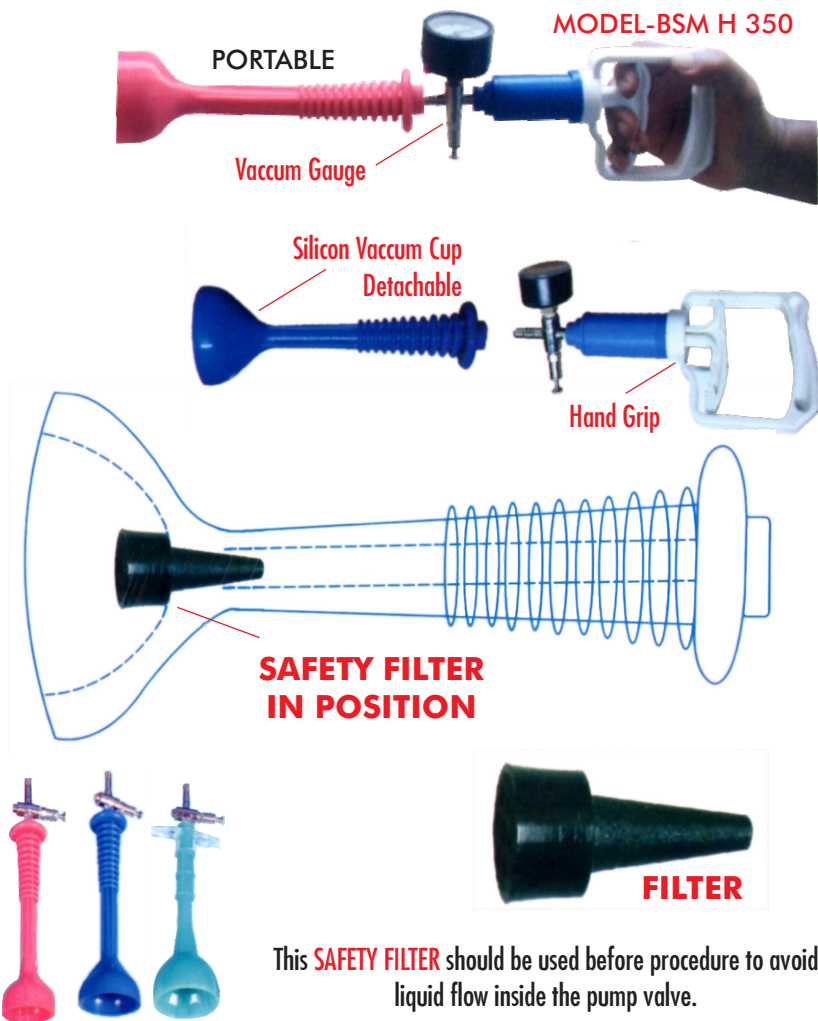
Double layer of shadowless LED light source is built in the colposcope head. This is maintenance free.

## GYNAEC & GENERAL APPLICATIONS

### MANUAL HAND VACCUM PUMP

For minor work with required safety negative pressure achieved. Suction pressure can be controlled or seen visually and the user can stop or proceed with the function accordingly since it is controlled by ourselves (Hand pump). Very low cost. No electricity required and hence can be moved to any place or for camp work. Silicon Vacuum Cup size available small / medium / large.

*\*Any make silicon cup can be attached.*



This **SAFETY FILTER** should be used before procedure to avoid liquid flow inside the pump valve.

# DERMATOLOGY & GENERAL



## MINI MICROSCOPE FOR AN EMERGENCY & PORTABLE

# MAGNAVISON

### SPECIAL FEATURES

- Imported Circular White light tubing around the Lens for better visualisation and cool light that keeps patients comfortable and operating staff free from fatigue avoids 90% thermal rays.
  - Unique Spring Loaded swing arm X, Y, Z directions down Swing Rotatable movements the adjustments is spontaneous.
  - Knob covers are Silicon autodavable for adjusting / focussing to the area of operation.
  - The Lens is highly resistant to all acidic cleaning material and hence has an unlimited life.
  - 6x magnification lens with 250 mm working distance and 500 mm total viewing distance.
  - 145 mm field (viewing area / Operating area) operated by 220-240 A/c + 10V Chocke
- ADVANTAGE - easily can be repaired at any place.



Model WF 145 6x

- Available with Floor Stand / Table Clamp and Hand Models.
- Operate simply connect with the A/c plug point.
- Switch on the control box and press the starter for instant glow.



**Table Clamp Model** also available (Ask for separate price list)



Available as an optional extra: Extension Arm Attachment



Hand Model



# PORTABLE SUCTION MODEL SXT-1A

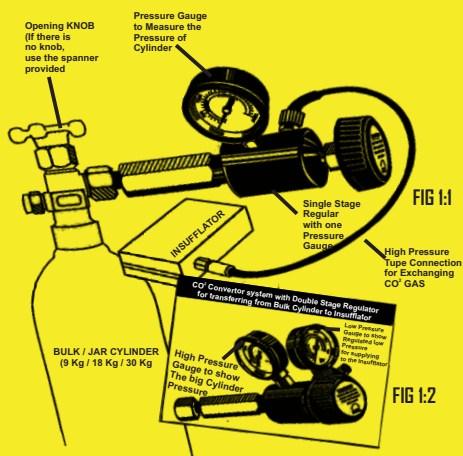
## Salient Features :

- Oil free vacuum source fitted with zero maintenance free piston cylinder pump.
- The overflow protection device prevents liquid or solid particles from entering the intermediate tubing.
- Air filter reduces environmental contamination.
- Compact and light weight, the unit cabinet is made of ABS plastic with handle for easy carrying.

## Specifications :

- Maximum Vacuum : >0.08MPa (680mmHg)
- Adjustable Range : 150mmHg-Max. VacCum
- Flow Rate : >22LPM
- Noise : <60dB(A)
- Storage Bottle : 1000ml x 2 (Polycarbonate)
- Power Supply : 220V, +10% 50Hz
- Input Power (VA) : 110
- Weight : GW - 6.1 Kg, NW - 4.5 Kg
- Dimensions : 550 x 264 x 365 mm

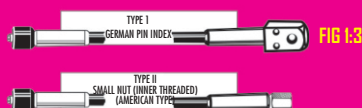
Portable Suction  
Model SXT - 1A



## CO<sup>2</sup> CONVERSION KIT CO<sup>2</sup> REGULATOR WITH SINGLE STAGE REGULATOR (for continuous surgery)

## LAPROSCOPY DIFFERENT TYPES OF FITTING

### CO<sub>2</sub> CONVERTOR- DIFFERENT TYPES OF FITTINGS / TUBINGS FOR INSUFFLATOR



## **RF CAUTERY**

**2MHz Radio Surgery with High Frequency**

**MODEL - RF - B2**



## **AESTHETIC AND RESTORATIVE SURGERY**

**T**he Technique of Radio Surgery involves the passage of high frequency radio waves (2MHz-Megahertz) through soft tissue to cut, coagulate, or remove the

tissue. Soft tissue resistance to these radio waves causes the cellular water in the soft tissue to heat, which produces steam, and results in cellular molecular dissolution of individual tissue cells. The surgeon uses a handpiece with an active electrode (different types of electrode for different applications) to transmit the radio waves. The radio waves are focussed on the tissue by an antenna plate (Patient plate) that is positioned behind the tissue in contact with patient's skin.

Radio surgery in general practice has many advantages over conventional surgical techniques particularly dermatological, plastic and eye lid surgery, ENT

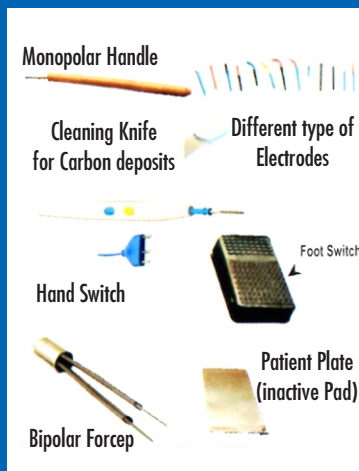
Dental : quicker operating time, rapid healing, less tissue damage and less post operative discomfort have been observed and its wider use in hospital practice is recommended.

Radio frequency is not to be confused with electro- surgery machine (surgical diathermy) or spark gap circuitry unit (electro-cautery) and uses completely new technique compared with scalpel surgery and other techniques and Radio energy does the cutting very light. The process involves the use of a very high frequency (VHF) Radio wave, 0.5-2 MHZ, and fine needle or wire loop electrode, held by the surgeon; Radio energy is passed between the cautery electrode and patient plate. It is concentrated at the needle end or wire loop electrode, resulting in the release of energy. Which produces steam within the cells, thus vaporizing them and dividing the tissues.

## STANDARD ACCESSORIES WITH UNIT

### Applications:

- ◆ Oculo
- ◆ Ptosis
- ◆ D.C.R
- ◆ Orbital Surgery
- ◆ Skin Tags, Warts, Corns
- ◆ Hair Restoring Surgery
- ◆ Spinder Vien Removal
- ◆ Resurfing Vicious Sears
- ◆ Abdominoplasty
- ◆ Development of skin Flap
- ◆ Resection of Mucose
- ◆ Menbrance Defcts
- ◆ Tongue lesion Removal
- ◆ Forehead Klife
- ◆ Ablation of Keloides
- ◆ Palatoplasty
- ◆ Keretosis
- ◆ Blepharoplasty
- ◆ Ritidoplasty
- ◆ Hemanglomas
- ◆ Lesion removal
- ◆ Tumours
- ◆ Rhinophyma
- ◆ Epilation
- ◆ Face Lifts
- ◆ Nipple Reduction
- ◆ Augmentation
- ◆ Mammoplasty
- ◆ Epistaxis
- ◆ Biopsies
- ◆ Crown Lengthening
- ◆ Flap Surgery
- ◆ Gingiveo Plastry



### More Advantages:

increased Revenus  
Reduced Stress  
Reduced Operating Times  
Pressure-less Cutting  
No Lateral Heat  
Micro-Smooth Incisions  
Increased range of procedures

### Standard Accesssries:

Monopoar Handle  
Patient Plate  
Electrodes Set  
Foot Switch  
Carrying Case  
Hand Switch  
Bipolar/forceps  
Cleaning Knife

### Specification:

Power Input 220 volts+5%  
Power Consumption 150 Watts.  
Frequency 2 MHz  
Maximun Output  
HF Monopolar 150 Watts on 400 ohm Load  
HF Bipolar 100 Watts on 100 ohm load  
Coagulation 100 Wattls on 1000 ohm  
**Size:** 81/2x71/2x4 **Weight:** 3.5 Kgs

## COMMON OCULOPLASTIC PROCEDURESUSING RFCAUTERY



**TRICHIASIS WITH  
RF CAUTERY**



**SKIN INCISION WITH  
RF CAUTERY**



**LEVATOR MUSCLE  
DIVIDED FREE WITH RF CAUTERY**



**BLOODLESS OPERATING  
FIELD WITH RF CAUTERY**

## SLH Binocular Loupes



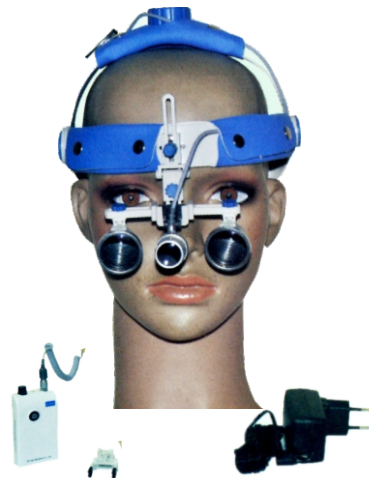
## SLE Binocular Spectacle Loupes



Magnification	Working distance (mm)	Field of view dia. (mm)
2.5x	340 / 420 / 460 / 500	80 / 100 / 110 / 120
3.0x	340 / 420 / 460 / 500	70 / 84 / 92 / 100
3.5x	340 / 420 / 460 / 500	60 / 72 / 78 / 84

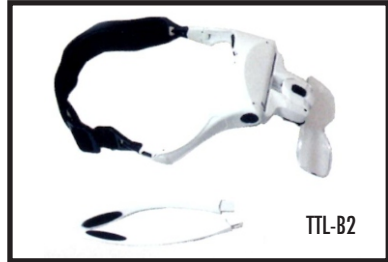
**The HI8000  
head-light is designed for  
examination and all types  
of surgical operations  
including microsurgery.**

- Variable intensity LED light
- No heat in the light's beam
- 6,000K, intense, shadow-free light
- Tissue colour-tones undistorted
- Rechargeable Li-Ion battery pack
- Range of magnification and focal-length loupes
- Crisp and clear images from high-grade glass, multi-coated loupes
- Eyepieces and headband are completely adjustable
- Comes with battery charger in
- robust flight - case.

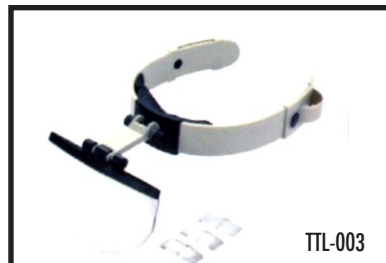


# T.T.L. Head Magnifiers

## General / Derma / Plastic



## Max Detail



# EAR PIERCING KIT

## MODEL EXXL CLASSIC

- ✦ An easy to use & reliable piercing system.
- ✦ Ideal for quick painless & accurate ear piercing
- ✦ Hyper allergenic, thin post & an ultrafine point provides safety & comfort.
- ✦ Hand pressured instrument. Not a gun. Provides a gentle precise piercing.
- ✦ No adaptors to change for other earring sizes simply load & pierce.
- ✦ Attractive acrylic display stand. Made in USA.



An easy-to-use and reliable piercing gun, its sturdy construction by hardened stainless steel working parts and injection - moulded handle.

Ideal for quick, painless and accurate ear piercing





## MARATHON-3

### MICRO MOTOR



E-type micromotor (SDE-M33E) with  
Straight handpiece (ES-6)




#### Features :


##### ENG


- Compact and portable size
- Continuous variable speed control
- On/off foot switch
- One-touch change of the driving direction for efficient operation
- No noise, vibration or heat after long hours of operation,
- ensuring smooth operation
- Possible to attach a contra
- Angle or straight handpiece for a desired purpose
- Straight handpiece (ES-6) or contra
- Angle can be combined with E type Motor optionally

#### Control Unit

	CATALOG No.		MODEL	VOLTAGE	CYCLE	
	#9300		M-3	110/220V	50/60Hz	
	AMP	R.P.M.	DIMENSION(mm)			WEIGHT (kg)
	DC 30V /0.5A	Handpiece Max.	W	D	H	
		100	130	67	1.5	

#### Brush Motor Handpiece

CATALOG			MODEL	NON LOAD	MAX TORQUE		ELECTRIC POWER	
No.				R.P.M.	(gf.Cm)		(w)	
#9090			SDE-M33E	0-33.000	240		35	
					WEIGHT		DIMENSION (mm)	
					(g)		L	L1
					142		115	30.5 84 10 25.8

CATALOG No.	MODEL	NON LOAD R.P.M.	MAX TORQUE (gf.Cm)	ELECTRIC POWER (w)					
#9041	SDE-H37L	0-33.000	260	35					
			WEIGHT (g)		DIMENSION (mm)				
					L	L1	L2	D1	D
			208	152	75	82	18	29.5	

Item	Model	Ref #
Control unit	Marathon-3	#9300
Motor handpiece	SDE-M33 (motor)	#9090
	Contra Angle	
	SDE-H37L	#9041
On/Off foot switch	SEP-20	#9003

# ELECTRO CAUTERY

## DERMATOLOGY, E.N.T. & GENERAL BYFRICATOR



### SPECIAL FEATURES

- Offers a choice of monopolar and bipolar current.
- Portable Model attached with Brief case for safe handling.
- Indensity variable accurately (50 - 100 WATTS OUTPUT)
- For minor coagulation and cutting, useful for E.N.T. Surgeons, Dermatologists, General Surgeons and cosmetologists.
- Ideal for instant coagulation, desiccation and fulgeration.

### EFFICIENCY

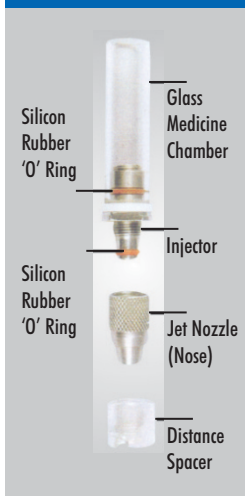
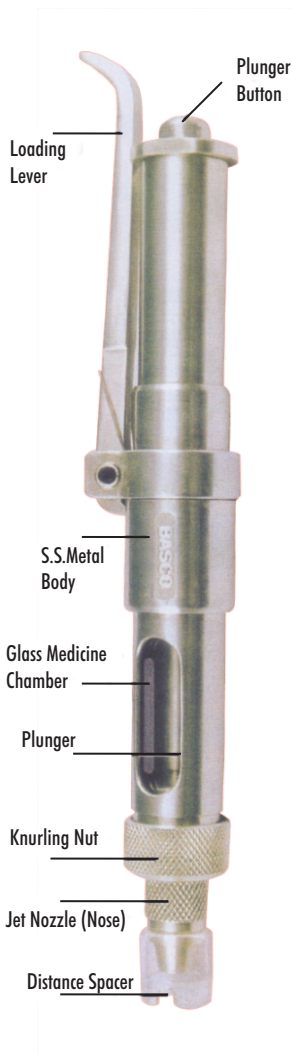
- This method is preferred by surgeons by removal of warts Acne Keloid, Corns,
- Cysts, Chonocrood, Tumors, Vaginal Cysts. Moles, Fobroma, Small tumours, Conjunctivities Epilation (Electrolysis) etc.,
- Excellent cosmetics result and obtained with little or no side effects.
- Abnormalities are removed bloodlessly.

### RESULT

- Unit gives amazing results in the removal of the growth on the surface and within accessible orifices. After dehydration the growth drops off naturally within a few days or by giving local anaesthesia immediately.
- New skin appears gradually and takes the tint of surrounding skin.



# DERMAJET B1 HIGH PRESSURE NEEDLE-LESS INJECTOR FOR VERSATILE APPLICATIONS



## Advantages galore

DERMAJET B1, is now the leading high-pressure, needle-less, automatic injector because of its simplicity, reliability, versatility and affordability - and its ideal usefulness in the case of patients who fear/hate needles. Available adjunct for surgical work, it provides infiltration while administering : anaesthetic solutions, parenteral drugs,

vaccines and steroids in aqueous suspension. Ideal for local anaesthesia or infiltrating steroids into nail matrix areas / medication into lesions.

Permits use of small volumes of anaesthetics /steroids while also providing effective levels of the anaesthesia and excellent tissue response.

Injects the medicaments with greater ease and virtually no pain.

Provides consistent depth of penetration of medication up to 2-6mm below epithelium, with the injector leaving a wheal (a circular, raised mark on the skin) upto 5-6 mm india.

Eliminates tissue distention / distortion of proximal wound edges, thus enabling better wound management.

Medicine Chamber of 4cc capacity (fully filled) permits injection of up to 40 shots - each of 0.1cc volume - given in rapid succession.

More effective than disposable needles & syringes.

Useful in accomplishment of local anaesthesia in the scalp

## SALIENT FEATURES :

**Clinical asepsis** - Injector nose never comes into contact with skin.

**Flexibility** - Can be used with any anaesthetic solution or combination of drugs (including steroids & suspension

**Easy to use** - Light in weight, unlike others. can be primed & fixed using just one hand.

**Easy to maintain** - Self cleaning (not requiring other solutions or apparatus). 100% sterilizable by any method.

# Mini Cryo Gun

## Liquid Nitrogen Cryo System

**DIFFERENT NOZZLES/TIPS**  
**Supplied with Kit**

Spray No33  
Plain (Common)      0.5mm      0.3mm

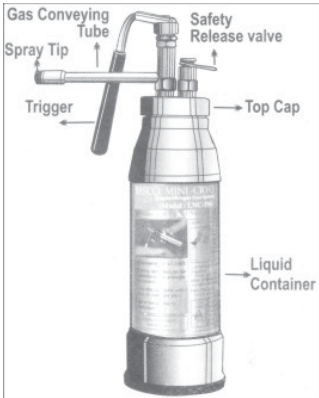
Spray Nozzle  
Pointed Needle

Spray Nozzle  
Curved Needle

Spray Nozzle  
Fan Type

Needle to spray into Endodermis

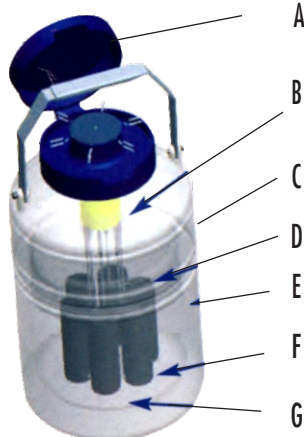
Rubber Bush Different Sizes used to Spray  
with in a limited area  
(minor warts / lesions)



# CRYO STORAGE CANS



MODEL	GP-1-30	GP-2-30	GP-3	GP-5	GP-6	GP-10	GP-10-90	GP-10A	GP-10B	GP-15	GP-20	GP-35	GP-35-125	GP-47-127
Number of canisters	1	3	6	6	6	6	6	6	6	6	6	6	6	6
<b>PERFORMANCE</b>														
Liquid Nitrogen Capacity (litres)	1	29	3.15	5	6	10	10	10	10	16	20	35.5	35.5	47
Static ration rate (litres / day)	0.06	0.06	0.1	0.1	0.1	0.1	0.18	0.09	0.16	0.1	0.1	0.11	0.4	0.33
Normal staticdu ration (days) without can isters	16	32	31	53	63	101	55	110	64	161	202	333	142	0.33
<b>UNIT DIMENSIONS</b>														
Neck Opening (mm)	30	30	50	50	50	50	90	50	50	50	50	50	125	125
Overall the light (mm)	320	365	320	435	445	530	545	600	530	600	655	670	695	675
Outside diameter (mm)	180	217	224	287	287	303	303	287	303	355	409	473	473	500
Canister height (mm)	120	120	120	120	120	120	120	276	120	120	276	276	276	276
Canister diameter (mm)	26	19	38	38	38	38	70	38	38	38	38	38	97	103
Weight empty (kg)	120	2	2	3.4	5	6.2	6.7	6.5	6.4	8.2	11.2	13.8	15.3	19



**A** Durable, tamper-proof lid design

**B** High strength neck tube reduces liquid nitrogen loss

**C** Strong, lightweight aluminium construction

**D** Canisters

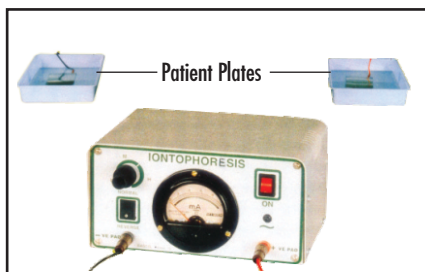
**E** Advanced chemical vacuum retention system

**F** Canister divider for easy retrieval and insertion of product

**G** Liquid Nitrogen Reservoir

# DERMATOLOGY DIGITAL AND NON DIGITAL IONTOPHORESIS

## Plain Tap Water Iontophoresis for Palmp Plantar Hyperhidrosis



**NON DIGITAL  
IONTOPHORESIS**



**DIGITAL  
IONTOPHORESIS**

### A brief description of the treatment

The device has electrodes placed in a shallow pan containing just enough level of water to cover the palms /soles. The device is switched on, with the potentiometer turned on to the "minimum" position. Now the patient's palms / soles are placed in the pan. (Note : Electrodes should be covered with wet cloth and kept under the armpits). And the potentiometer is slowly advanced. As it is rotated to 5-8 mA, the current begins flowing, and is increased till the patient feels a little discomfort. At this stage, the current is slightly reduced and permitted to flow for 10-15 minutes, then the current is reduced to zero, and the patient's palm / soles are removed this treatments is resumed after some time, when the current polarity reversing switch is thrown, this enables each side being subject to anodal current for half of the treatment period.

### MAJOR FEATURES

- An inexpensive machine, its operating costs are very low.
- Its operation requires almost negligible prior training.
- Very effective, safe and gives superior results, thereby increasing the efficiency of the physician.
- Improves the quality of medical care.

# DERMATOLOGY WOODS LAMP



The BASCO make Woods Lamp Portable Mode comes with Twin Ultra Violet tubes to induce fluorescence in Dermatoses and an additional extra. White tube for Magnification. Both the Lights can be operated separately.



Examination of the skin or Hair with Woods Lamp is a time-trusted technique to aid in the clinical diagnosis of some cutaneous disorders. Wood Light examination should be performed in a dark room, and total darkness is also satisfactory.

1. Dermatoses in the intertriginous areas
2. Patches on the scalp with scaling or partial hair loss (especially with broken hairs)
3. Pigmentary alterations
4. Diagnosis of burrows in scabies
5. Blisters and punctate erosions on the dorsum of hands, forearms
6. Tinea versicolor

## DERMATOLOGY PORTABLE PUVA : UVA/UVB

Wave Tested :

2 to 4 Joules - 400 NM (NANOMETER)

Treatment for :

Vitiligo / Lucoderma

Lamp - UVB 4W

Black Light - FL4BL

Precaution : Use goggle / Protective goggle (without see-through) to protect eyes while using in face / lips. Joules will start reducing gradually while using. However after some time, bulbs can be replaced to get once again the correct wave length.



MODEL-PUVA-501

**CAUTION**  
Avoid using with one tube.  
Replace immediately with new tube to avoid overload to the transformer

## SKIN BIOPSY PUNCHES

Disposable Biopsy Punches (Sterilized)



Available

SIZES :

1, 1.5, 2, 2.5, 3

3.5, 4, 4.5, 5, 6

7, 8mm

### IMPORTANT FEATURES

- Seamless sharp blade Hollow handle with sure grip design
- Safety capped
- Single use-disposable
- Handle embossed with the appropriate punch size for quick selection

### Cordless / Battery Cautery (Pen Torch Cautery)

- operates on pen torch cell
- Added feature of replaceable AA batteries.
- Fine & loop type tip-replaceable.
- Pocket size, instant use.
- Pressure - sensitive switch
- Useful for Dermatologists for treatment of molluscum (M.C) & most minor surgical work.
- Works at optimal high temp. of 400oC
- Weights approx. 110gms (w.battery)
- A second tip offered as optional extra.
- Completely safe.
- No service is required.



# SURGICAL DIATHERMY

Solid State with Bipolar Arrangement

Model: BI-400W & BI-250W

ESSENTIAL FOR TODAY'S SPECIALITY SURGERY

## MONOPOLAR WITH BIPOLAR



BI-400W



BI-250W



Perfect for any major or intricate and complicated surgery. Hence, enables optimization of working, depending on the various tissues involved.

Safety of apparatus conforms to international standards.

Facilitates optimum cuts and coagulation. The result; Precision in operation and, also lowest power consumption.

Preferred apparatus for ENT, Neuro Surgery, Gynaecology & General Surgery.

### Technical Specifications for Surgical Diathermy / 400 Watts; 250 Watts

Function / Data :	400 Watts	250 Watts
Auto Electro Surgery	400W/80 - 1000	250W/80-1000
Soft Coagulation	150W/80 - 1000	150W/80-200
Input Voltage	220/240V - 50/60 Hz	220/240V - 50/60 Hz
Working Frequency	450 KHz	450 KHz
Output Power Max Cut	350W/ INTO 400 ohms	180 Watts into 400-ohms
Output Power Max - OAG	Two Mode Soft / Normal 200 Watts	120 Watts into 400 ohms

Output Power Activation by Foot and Head Switchers & Security Level - Standard.



# LED HEAD LIGHT MODEL-LHL-3

## Easy to Wear

## Head Loupe with Spot Light



### SPECIAL FEATURES

- TOTALLY LIGHT WEIGHT
- PLUG TYPE DEVICE FOR MAGNIFICATION LOCK
- SPECIAL LED BULB USED
- VERY COOL AND WHITE SPOT LIGHT
- BATTERY OPERATED FOR EMERGENCY
- ADJUSTABLE HEAD BAND TO SUIT ALL THE HEADS
- ADDED ADJUSTMENTS FOR BETTER COMFORT
- MAY BE USED FOR CONTINUOUS SURGERY

### FEATURES

- WORKS WITH AC MANIS 150-300V
- CURRENT CONSUMPTION NIL
- LONG LIFE, CONTINUOUS RATING
- SPOT LIGHT FOCUS FROM 200MM TO INFINITE
- 2X, 2.5X, 3X, 4X MAGNIFY LENSES (LOUPES) INTER CHANGEABLE (OPTIONAL EXTRA)



Rechargeable Battery



AC Adaptor



- Charging 2.5 hours
- Backup time 1.5 hours continuously



## OPHTHALMOLOGY

Wet Field

# BIPOLAR COAGULATOR

for Micro Surgery (OPHTHALMIC)



MODEL N/D - 009  
(DIGITAL)



BIPOLAR FORCEP (Autoclavable)



BIPOLAR ERASER (Autoclavable)



BIPOLAR CABLE (Silicon Autoclavable)

### SPECIAL FEATURES :

- Power required for Wet-Field is 230 Volts, 50 cycle A.C. + 10%
- Foot Control system gives convenience to Surgeons.
- Forceps, Erasers, cables are autoclavable.
- Digital Display for easy setting.
- Imported Forceps and Erasers can be attached.
- Power control is continuously variable between 1-9.
- Audible tone lets surgeon know the unit is activated.
- Compact in size, Elegant Look and easily portable.

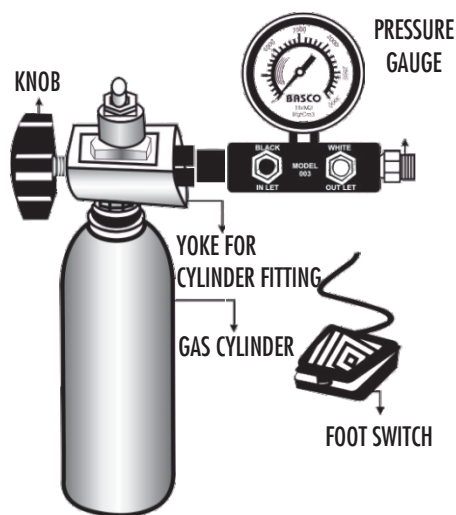


MODEL N/D - 010  
Non Digital

*Isolated  
Bipolar  
Solid State*



## **JANATHA SLIM CRYO** **MODEL - 003**



### **SPECIAL FEATURES :**

- Non Electric
- Nitrous or Carbon-di-oxide gases technique are used for Low Temperature achievement.
- Useful for CATARACT, RENTAL, GLAUCOMA and INTRAVITREOUS.
- Foot control provision for easy handling and instant freezing and defrosting.
- Low cost in use.
- Two Years Guarantee.
- Backed by prompt After-sales-service.

### **DIFFERENT TYPE OF PROBES (OPTIONAL EXTRA)**

**CATARACT PROBE**



**RETINAL PROBE**



**GLAUCOMA PROBE**



## DIGITAL DERMASCOPES



**MADE IN  
USA**

- 12 Levels of polarization
- 15-50x Magnification
- Wireless imaging
- Software included

## CRYSTAL FREE MICRO DERMABRASION



**Model : BI 10**

### Salient Features :

- Oil free vacuum source fitted with zero maintenance free piston cylinder pump.
- Compact and light weight, the unit cabinet is made of ABS plastic with handle for easy carrying.

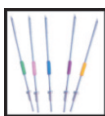
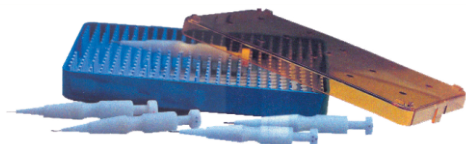
### Specifications :

- Maximum Vacuum : >0.08MPa (680mmHg)
- Adjustable Range : 150mmHg-Max. Vacuum
- Noise : <60dB(A)
- Power Supply : 220V, +10% 50Hz
- Input power (VA) : 110
- Weight : GW - 6.1 kg, NW - 4.5 Kg
- Dimensions : 550 x 264 x 365 mm

# One Step Hair Transplantation



## Disposable Needle for Follipen



Code No.	OD	Gauge	Area to be used
Green OSI-06	0.6mm	24 G	For Eyelash & Eyebrow Fine Hair
Pink OSI-08	0.8mm	22 G	For Single Hair, Temple Area, Pubic
Blue OSI-1.00	1.0mm	20 G	For Two Hair & Middle part of Scalp
Maroon OSI-1.3	1.3mm	18 G	For Three Hair
Yellow OSI-1.5	1.5mm	16 G	For Four - Five Hair Follicle

## Follipen (Hair Transplantation)

The Follipen implanter is a placement device used exclusively in “STICK” & “PLACE procedure” for implanting follicular units to a bald area as scalp, pubic, eyebrow, eyelash and scar area.

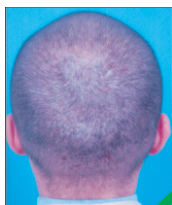
In case of using this product, there is no need to make a recipient site hole in advance like “Pre-make Recipients site” using Mess or Punch device.

The 2-tasks to make a recipient site and placement of grafts is carried out by One-step action.

## FUE

### Follicular Unit Extraction

*Minimized Twisting,  
Overheating and Compression.*



**FUE** ✓



**STRIP** ✗



**NO NEED OF SCALPEL  
AND STITCHING**

# F.U.E. Extractor



## In skilled hands

- Minimally pain free
- Reduce potential for visible scarring
- Deliver a high rate of undamaged Fu's
- Reduce the time for FU extraction sessions
- Have minimal potential for transection

## Eco Model F.U.E

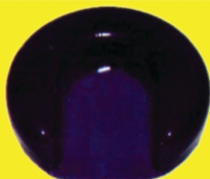
Eco Model F.U.E Punch Sizes available
0.75mm
0.80mm
0.90mm
1.00mm

## Silicon Gel Head Beds

Prone Pillow Foam



Horse Shoe



Doughnut

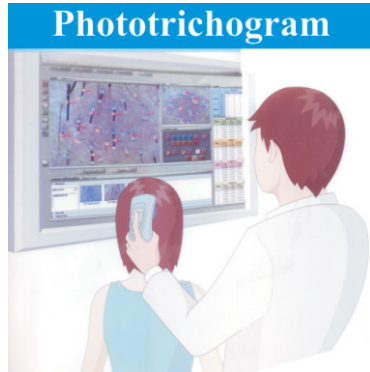


## Hair and Scalp Analysis System

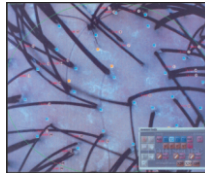
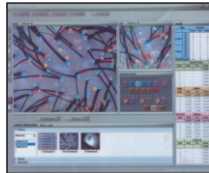
using digital video microscope

The system that offers to customers accurate hair and scalp information by examining such important hair characteristics as density, thickness and growth rate with the use of computer equipped with a high definition colour video microscopic camera and with a high definition colour

video microscopic camera and extra software.



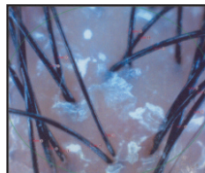
Full & Default View



Density



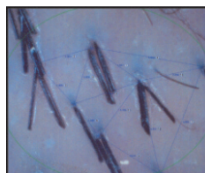
Caliber






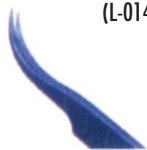








Growth Rate



Distance



## HAIR TRANSPLANTINSTRUMENTS

 <p>Denistometer (L-028)</p>	 <p>Handle for SP 90,91 (L-012)</p>
 <p>Foreep, Straight (L-0313)</p>	 <p>Forcep curved (L-014)</p>
 <p>Forcep, 45S (L-015)</p>	 <p>Forcep, 451. (L-016)</p>
 <p>Forrester(S/Curved) (L-017)</p>	 <p>Forrester(S/Straight) (L-0818)</p>
 <p>GraftCup (L-019)</p>	 <p>Atone Forcep (L-020)</p>
 <p>Quard Dish/GI (L-023)</p>	 <p>Quard Dish/Ce/Autoclave (L-024)</p>

## **GOLD LIGHT SOURCE WITH FIBRE OPTIC HEAD BAND SYSTEM**



### **GOLD LIGHT FOUNTAIN TWIN BULB-MODEL L.S.T.011**



Single Bulb - Model L.S.S.010

### **SPECIAL FEATURES :**

- Available with Single / Double Outlet - (TWIN BLUB)
- Twin-Blub Model to provide two lamps at emergency time (Built-in spare lamp).
- The front cable adaptor is suitable for KARL - STORZ cable fitting. For othter makes. adaptor is available seperately.
- 15v / 150w & 24v / 250w capacity available in both single and twin outlet model.
- 230v input and fuse capacity 1.5 to 2 amps. intensity - 60,000 to 80,000 LUX.

# COSMO CHAIR



**Ideal for Hair transplant  
Cosmetic and ENT  
procedures**



**Minimum height from base 22"**  
**Maximum height from base 30"**

**Upholstery dimensions**

**Length 72"**  
**Width 24"**



## **Chair Features**

- Fully Electrical Chair operated using Noiseless imported motor system.
- Electrically controlled Up/Down, Back Rest and Foot Rest movements.
- Elegant upholstery available in different colour ranges to suit the customer's choice.
- Flexible arm rest which lies flat with the chair.



## FRACTIONAL CO2 LASER SUDAR FRAX

## Features :

- ❖ Ultra High Energy Pulses for Char Free Ablation
- ❖ Scanning area 30 \* 30mm2
- ❖ Overlap Scanning 1 to 20 times
- ❖ Distance between LASER spots variable from 0.1mm to 2.6mm
- ❖ Seven different scanning patterns
- ❖ Three Methods of Scanning
- ❖ Five Memory keeping Storage



## Patterns



## FRACTIONAL CO2 LASER SUDAR FRAX APPLICATIONS



Acne Scar

Wound Scar

Resurfacing

Freckles

### TECHNICAL SPECIFICATION :

Laser Type	:	Co2 LASER (DC Excited)
Wave Length	:	10.600mm
Delivery System	:	7 Joint Articulated arm
Cooling System	:	Closed loop Water Circulation
Aiming Beam	:	650mm Red diode laser
Mode	:	TEM <sub>00</sub>
Display	:	Touch Screen Color LCD
Operating Mode	:	Fractional, Normal
Dimensions	:	320mm x380 mm x1140 mm
Weight	:	45kg

1. Acne Scars
2. Actinic Keratoses
3. Basal cell carcinoma
4. Burn debridement
5. Laser skin resurfacing
6. Eliminate the scar:  
Traumatism / operation
7. Improve texture fine and pore size
8. Smooth wrinkles around the eyes and mouth
9. Rejuvenate your neck, chest and hands etc.,

### FOR FRACTIONAL MODE :

Laser Power	:	1 to 30 watts
Ultra Pulse Duration	:	100 Micro Sec to 10 Milli Sec
Pulsed Delay	:	1 to 2000 ms
Overlap	:	1 to 20 times
Distance between Shots	:	0.1 to 2.6 mm
Shapes	:	Circle, Hexagon, Triangle, Square, Rectangle, Straight Line And Ellipses.
Scanning Area	:	30 * 30mm <sup>2</sup>
Scanning Modes	:	Normal, Midsplit, Random.

### FOR NORMAL MODE :

Laser Power	:	1 to 30 watts
Emission Modes	:	Continuous, Single, Repetitive Pulse
Single Pulse Duration	:	10 to 1000 ms
Pulse On time	:	10 to 1000 ms
Pulse off time	:	10 to 1000 ms

# MR INJECTOR

## Leading Contrast Delivery Systems Forward

### SPECIFICATIONS :

Power Supply	100~240VAC, 50/60Hz, 300VA
Flow Rate	0.1~45ml/s
Pressure Limit	1200PSI
Auto Filling Rate	8.0ml/s
Exhaust Rate	1.0~9.9ml/s
Piston Auto Moving Speed	9.9ml/s 0.1-9.9sec
Rise Time	0.0-99.9sec
Injection Delay	0.0-99.9sec
X-Ray Delay	4
Phases	100
Protocols	100
History Records	1~150ml
Volume	
Multiple Language User Interface	



### High Quality Disposables



• 48VDC Power



• 150ml Syringe for Contrast



## Compatible For LF



- LF C19000, CT9000ADV, Optivantage DH, For CT
- Volume : 200ml



- LF Angiomat 6000, For CathLab
- Volume : 150ml



- LF Angiomat 3000, For CathLab
- Volume : 100ml



- LF Angiomat Illumena, For CathLab
- Volume : 150ml

## Compatible For LF

## Compatible For Medtron

## Compatible For EZEM



- LF Optistar MRI, For MRI
- Volume : 60ml



- Medtron Accutron CT, Accutron CT-D, For CT, Accutron HP-D, For CathLab
- Volume : 200ml



- EZEM EmpowerCT, EmpowerCTA, For CT
- Volume : 100ml



- EZEM EmpowerMR, For MRI
- Volume : 100ml

## Compatible For Nemoto



- Nemoto A-25, A-60, Dual Shot, For CT
- Volume : 100ml



- Nemoto A-60, Dual Shot For CT
- Volume : 200ml



- Nemoto 120S, For CathLab
- Volume : 125ml



- Nemoto Dual Shot, For CT, Sonic Shot 50, For MRI
- Volume : 60ml

**antmed**

- Ensure Patient Safety - DEHP Free, Comprehensive Clinical Validation And Stringent Bio - compatibility testing
- Enhance Operational Efficiency- Excellent in temperature and pressure resistant, the deformation of tube is smaller, yields Great Efficiency for angiography
- A Variety Of Styles of Tubing to Best Fit Your Needs - Lengthends, Coiled, Straight, T-tube, one-Way Checkvalve and backflow prevention device. Customization Requests can be accommodated



Tubes for CT (straight & coiled)



Tubes for MRI (Y & T type)



Tubes for CathLab (600 psi)

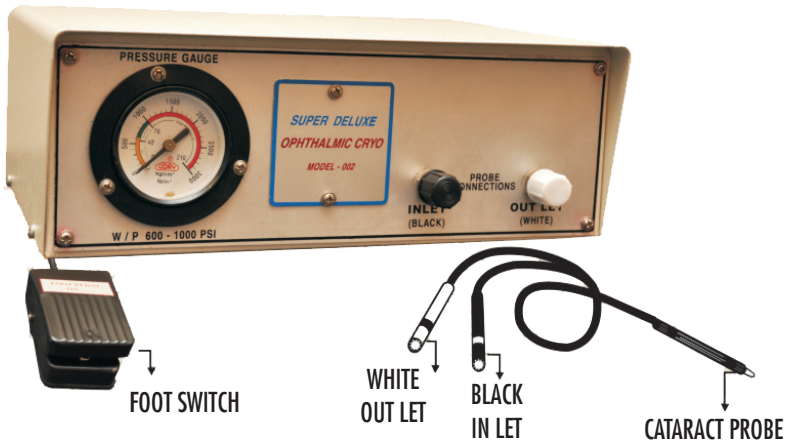


Tubes for CathLab (1200 psi)

Connecting Tube Type	Length	Pressure Range MPa(Psi)	Specifications
CT Connecting tube	5cm ~ 250cm	2.4(350)	Y&T straight, Coiled tube with Checkvalve(S) stopcock & Spike
MRI Connection Tube	5cm ~ 250cm	2.4(350)	Y&T Straight, Coiled tube with Checkvalve(S) stopcock & Spike
Cathlab Connecting Tube	5cm ~ 250cm	4.2(600)	Straight Line with rotating male Luer-Lock
	5cm ~ 250cm	8.3(1200)	Braided Line With rotating male Luer-Lock

## OPHTHALMIC PRODUCTS

### OPHTHALMIC DELUXE CRYO MODEL - 002



## DIFFERENT TYPE OF PROBES (OPTIONAL EXTRA)

CATARACT PROBE



RETINAL PROBE



GLAUCOMA PROBE

